

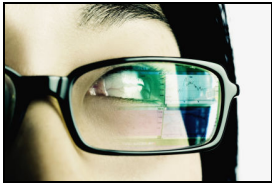


# GOOD NEWS

The Newsletter of Clovis Memorial United Methodist Church May 2010 Ph: 299-4615

"The Mission of the United Methodist Church is to make disciples for Jesus Christ for the transformation of the world."

## QUICK LOOK



Congregational Life  
Page 2

Thrift Store,  
Page 2

Special Friends,  
Page 2

UMW,  
Page 2

Youth,  
Page 3

From the Pastor,  
Page 4

Calendar,  
Page 5

Birthdays,  
Page 6

**PARENTS' TIME OUT BIKE RIDE MAY 2:** The weather is gorgeous, the day is longer, let's ride bikes! The Parents Time Out (PTO) group invites all parents to join them at 5 p.m. Sunday May 2 for a bike ride through Clovis. What is our destination? Ride along and find out!

**GOODBYE POTLUCK FOR DENICE LESLIE JUNE 6** Mark your calendars: Memorial UMC will hold a church family potluck on June 6 in honor of our departing pastor, Denice Leslie. Join us for a combined worship service at 10:30 a.m. and then stay for a scrumptious potluck at and celebration of our life together with Denice in the Fellowship Hall. Watch the Sunday bulletins for further information!

**JACK OF ALL TRADES:** Are you handy with a hammer? Proficient with plumbing? Exceptional with electrical? We are looking to supplement our Facilities Maintenance Team with people from the congregation who have skills/experience in fixing things. The team takes care of the church campus - indoors and out - so if you want to help take care of the church exterior and grounds, we can use your help too! If you are willing to donate your time in a hands-on way, please contact Jim McClanahan, team leader at 291-8403. (You can also contact the church office at 299-4615).

**SHARES CARDS AT WORK:** Thanks to all who faithfully use the SHARES cards at SaveMart and Food Max. Since December 1, we have received over \$470 from this program. Please continue to use your card and if you don't have one, there are plenty in the church office. Please see Diane Zastovnik or Sharon Hutchinson if you would like to use a card. To help the church, all you need to do is shop at SaveMart or Food Max and give the card to the checker when paying for your groceries. Approximately 3% of your purchase is returned to the church. Purchases of postage stamps, gift cards, event tickets, fuel, sales tax are not eligible for the 3% return.

**THAT SPECIAL SOMETHING:** Have you been invited to a baby shower, maybe there's a bridal shower to attend or you need a gift for a friend? Maybe you just don't know what to buy or are limited on time to shop. Let the Boutique Group help you. We have many unique, handmade items that just might work out for you. We have gifts available for purchase that come in a gift box lined with tissue and a card. If we can assist you or if you have questions please call Carole Schweitzer at 299-3432 or Barbara Nielsen at 291-0935.

## Congregational Life

*"For where two or three are gathered in my name, I am there among them." Mt. 18:30*

**KEVIN'S KENYA MISSION:** "Hey, y'all! It was so good to share with you guys a few Sundays ago about my 1st mission to Kenya this summer. I was particularly amazed that you all received my passion for this so well. Thank you to all who came joined me in fellowship and discussion about the trip after service. I especially want to thank those supporting me financially /and/ by prayer. If anyone would still like to offer me any financial support, then please write all checks out to Monte Vista Chapel with my name and the word "Kenya" in the memo line so that your support goes where you intended it. My goal is to raise \$3,900 by the deadline of May 16th. I look forward to coming back and sharing my stories with all who'll listen. God bless you, my beloved Family in Christ." - Kevin Bonzo.

**THRIFT SHOP NEWS APRIL 2010:** We opened in April with a chilly wind and the threat of rain. We didn't get the rain during the time we were open but it was cold. We didn't make our \$1000 goal this month, came in just under that at \$966. We were very low in inventory and it was Good Friday. We did have a normal Saturday with receipts about the same as any Saturday. We are asking for donations AGAIN. Keep those gently used, clean items coming. We need everything (still). Again thanks to our faithful volunteers. Special thanks to Janet and Jodie who both worked both days, even working a full day on Friday. We appreciate the extra effort Jodie gives, too every time when she arrives very early to help open and do the vacuuming for us. Again, thanks for your support.

**SPECIAL FRIENDS:** The Special Friends group met April 8<sup>th</sup>, sharing the MUMC Mission statement. Following the prayers the scripture reading was John 13:34-35. We read the words of "We've a Story to Tell to the Nations". The meditation was from the March-April 2010 Upper Room. We shared how God was working in our lives, then gave our reports on visits with our special friends; this month we sent 44 cards, made 45 phone visits and 20 visits. The next meeting is scheduled for Thursday, May 13<sup>th</sup> at 3:30 pm. A

closing thought: Today, each of us can be the answer to someone's prayer. Blessings, Lorraine May.

### **UMW NEWS MAY 2010:**

\*No Executive Board Meeting.

\*May 12: red Bird Circle meets at 9:30 am in the Lose Library.

\*May 18: Regular UMW meeting at 10 am in the Social Hall. Lucy Elgin will be speaking. Please bring your own service. All women, young and old and in-between are welcome!

\*May 26: Wesley Guild meets at 1pm in the Social Hall.

**BOUTIQUE NEWS:** After last month's item in the newsletter, Nancy Heberlein decided to come and see what we were all about; welcome Nancy! The invitation is always open for anyone to come and check us out and remember that you do not have to be a member of Memorial United to join in the fun. Our group consists of many talented and friendly women and after visiting and "working" some of us go out to lunch. We meet on Wednesday mornings in the Fellowship Hall from 9 to 11am.

### **REQUESTS FOR USE OF CHURCH FACILITIES:**

Periodically, there have been conflicts in requests for use of the facilities and the scheduling of activities. This has been a recurring problem I thought I had taken care of but it needs to be revisited. It is critical that any desired use of the facilities be formally requested, in writing, through the office and placed on the calendar. I realize that, in some cases, permission has been granted by someone other than me or Sara but it is imperative that any event be requested through Sara so that proper recording of that scheduling can be completed. Furthermore, submitting an article for the newsletter or bulletin is not a sufficient calendar request; Sara needs a SEPARATE calendar request for all events, either by e-mail or on paper, so that she has something specific to refer to. -Max Cannon, Building Use Coordinator

### **UNITED METHODIST CHURCH PASTORAL APPOINTMENT-MAKING PROCESS:**

Everyone is by now aware that Pastor Denice has been re-appointed to the United Methodist Church in Hughson, California, after having served our church for 13 years. It is in-

deed a sad time for us and our pastor, but as we move through our grief, the Staff-Parrish Relations Committee (SPRC) felt it important that we all have an understanding of how a new pastor will be appointed to our church. This process is laid out in some detail in the 2008 UMC Book of Discipline, but is summarized below, hopefully simplified.

The periodic movement of United Methodist pastors from one church to another is based upon a UMC principle called "itinerancy," which basically means that pastors are subject to reassignment to a different church from time to time during their years of service. The period for a new appointment is generally not less than three years, and as evidenced in the case of Pastor Denice, an appointment to one church can last much longer. As upsetting as this process is, or can be, it is not new; pastors joining the UMC ministry are aware of this policy.

Having said that, then what is the next step in the process for us? Actually, the first of a number of steps has already occurred. The Book of Discipline puts the major responsibility on the SPRC for acting as the Church representative. District Superintendent Mariellen Yoshino (the DS) called a meeting with the SPRC on April 7, 2009, for the purpose of discussing the appointment process, but more importantly, to hear from us our desires and expectations in a new pastor. At the invitation of the SPRC, certain members representing our 9:30 am, 11:00 am, and the Hmong services attended the meeting. In addition to our group's testimony, the DS was given a copy of our church profile outlining our diverse makeup and the challenges ahead facing any appointee.

The DS is now taking the next step in the process by presenting all the information obtained from her meeting with us to the Cabinet and Bishop. Their duty is to try to match this information to a range of candidate pastors who are subject to the itinerancy process, and whose qualifications they feel best meet Clovis UMC's needs. From the range of candidates, they will select the one who stands out as best qualified for appointment to our church.

Once the new appointee is selected by the Cabinet and the Bishop, the DS will take the next step by introducing him/her to the SPRC and the representatives of the three services. We will have the opportunity to present questions and have dialogue with the candidate minister so that we may learn as much as possi-

ble about the person. Following this question/discussion period, our group will then privately discuss our impressions and feelings about the person, but no vote is to be taken. If we have objections, these can be voiced to the DS, but we will not have the authority to accept or reject the selected person.

Any objections will be taken by the DS back to the Cabinet and Bishop, who will listen to the objections. Only compelling objections will be considered, but the Bishop can override them if in his opinion, they are not substantive enough to deny the appointment.

After review of our comments and objections (if any), a final decision will be made by the Cabinet and Bishop to make the appointment final, or to accept the objections as valid. If the objections are considered valid, the process will be repeated until a final candidate is selected. Once the decision is final, the newly appointed pastor will be introduced to the Congregation.

As for timing, the process is proceeding, and at the risk of being optimistic, we are hopeful we will have an appointed pastor by the end of May or sometime in June.

I know this is a lot of information to digest, so if you have any questions, please feel free to contact me at (559) 322-8487, or e-mail me at leocd@aol.com. Thank you for your patience and understanding.  
- Cecil Leonardo, Chair-Staff-Parish Relations Committee

## **YOUTH CALENDAR**

- ✿ **SUNDAY 05/02/10**
  - ✿ **NO HOLY CLUB MEETING**
  - ✿ **5:00 P.M. PTO BIKE RIDE**
- ✿ **SUNDAY 05/09/10**
  - ✿ **5:00 P.M. HOLY CLUB MOVIE NITE, BUNGALOW**
- ✿ **SUNDAY 05/16/10**
  - ✿ **5:30 P.M. HOLY CLUB MEETING, BUNGALOW**
- ✿ **SUNDAY 05/23/10**
  - ✿ **5:30 P.M. HOLY CLUB MEETING, BUNGALOW**
- ✿ **SATURDAY 05/29/10**
  - ✿ **8:00 A.M. POVERELLO HOUSE WORK DAY**
- ✿ **SUNDAY 05/30/10**
  - ✿ **5:30 P.M. HOLY CLUB MEETING, BUNGALOW**

## FROM THE PASTOR

**COACH'S CORNER:** Dear Hearts and Gentle People, by the time you receive this issue of the Good News I will have four weeks remaining with you as your pastor. My time now is focused on wrapping up and transitioning to the new pastor. So I want to say a few things to you about the coming of the new pastor. First, leadership is a partnership. It does not reside in one person. It is about the relationship you build together. Plan now to do your part. And remember that prayer is also action. Second, a new pastor arriving at a new church is very similar, as one church consultant shared during a Transition Workshop, to an actor being parachuted into the second act of a play at the same moment one of the main actors has been air lifted out. S/he doesn't have a script, but the play is moving on and s/he is supposed to do her/his part! So be patient, be gracious, and be anticipatory. Put yourself in this person's shoes and before the need arises anticipate what that need might be. When I first came here you brought us a meal for the first night and a gift basket and provided us with a list of local businesses such as a good car repair shop and other such helpful referrals. You called and asked if we needed anything, such as ice or beverages. Moving is a long tiring ordeal and it will be hot by July. Remember that the new pastor will most likely be leaving a congregation he/she loved and grieving as well as excited but also feeling some anxiety about what the new church will be like. You and I know they will be surprised by joy! So give them that reassurance. Finally, changes in pastor are times folks tend to stand back and reassess their commitments. Folks, when all is said and done, it's your church. Hang in there and go on being the people of God I have so appreciated over my years with you. Don't forget your mission is to Show and Tell Jesus' Love Everywhere—and that includes with each other. Blessings, Pastor Denice

## PUZZLE OF THE MONTH

		7			4					c
5						6		7		
3					8			a		
8			6	7	1			3		b
b			9							
	1					a	5			
9			8						1	4
	a					8	2		b	
			3	b				5		6
	6							b	7	
		9				a	5		8	
	c	8				3				4

[www.sudoku-puzzles.net](http://www.sudoku-puzzles.net)

Solution to last month's puzzle:

c	4	3	7	a	2	5	6	9	1	8	b
8	6	1	5	7	9	b	c	2	4	a	3
9	2	b	a	8	4	3	1	5	6	7	c
3	7	4	c	6	5	9	a	1	2	b	8
1	a	5	6	2	8	4	b	7	3	c	9
2	9	8	b	3	1	c	7	6	a	4	5
6	1	9	3	b	c	8	2	a	7	5	4
a	b	c	4	1	6	7	5	8	9	3	2
5	8	7	2	4	3	a	9	c	b	6	1
7	3	a	9	c	b	2	8	4	5	1	6
b	5	6	8	9	7	1	4	3	c	2	a
4	c	2	1	5	a	6	3	b	8	9	7

[www.sudoku-puzzles.net](http://www.sudoku-puzzles.net)